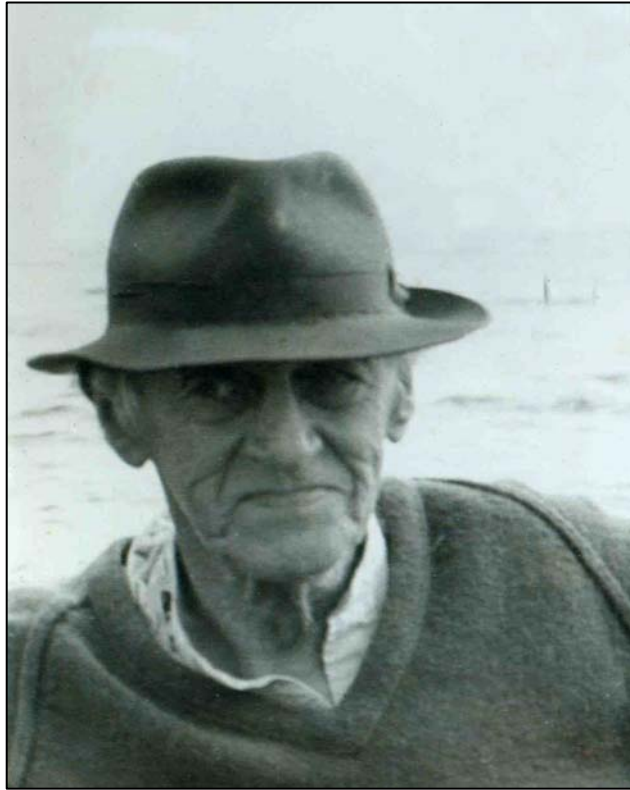


Hidden gems and Forgotten People

COUNTY ROSCOMMON ARCHAEOLOGICAL AND HISTORICAL SOCIETY



Walter Levinge (1894 – 1982)

Walter Hodson Levinge of Carnagh House, Kiltoom, Athlone, Co. Roscommon, who was born in 1894, spent some of his early life in Canada returning to a life of farming and boat building at Creaghduff, Co Westmeath.

Described as “untidy, pipe-puffing, silent and old fashioned” Walter’s name is synonymous with the introduction of the Shannon One Design and the advances it brought to sailing on the Shannon lakes in the 20th century. He is credited with having built the earliest Shannon One Designs and with having built more than sixty over his lifetime. He was also a founder member of the Inland Waterways Association of Ireland and Commodore of Lough Ree Yacht Club. He is buried in St Peter’s Church of Ireland Graveyard, Kiltoom, Athlone Co Roscommon.

This graveyard, having been derelict and vandalised for a number of years, is undergoing a major restoration funded by family donations and a grant from Roscommon County Council. Manpower is from Roscommon Leader Partnership under the TUS scheme. It is located between Roscommon and Athlone on the N61 and is opposite the Kiltoom Stores.

Richard Collins